



**Murrays Bay**  
INTERMEDIATE

# 2024 NEWSLETTER

Volume 2 - 16 FEBRUARY 2024

He taonga rongonui te aroha ki te tangata  
Goodwill towards others is a precious treasure

## FROM THE PRINCIPAL'S DESK

*Kia Ora Parent(s)/ Caregiver(s)*



It has been wonderful to complete a full week of learning at school. The atmosphere in classrooms and in the playground is extremely positive, and I am delighted to note that we have a huge number of students committing to extracurricular activities. Trials are well underway for various sports teams, dance auditions have begun, and our music programmes got up and running this week as well. I expect our students are going to have a very full, exciting, and successful year ahead.

I would like to extend a huge thank you to our parents who attended Our Kids Online presentation with Rob Cope on Tuesday night. I hope you left feeling empowered and motivated following the sharing of his knowledge and valuable insights. As a school, we have been extremely fortunate to obtain **FREE** access to The Big Reconnect - a cyber safety package that gives families 12 months membership with information and modules you can continue to explore with your whānau. To access this incredible resource please click on the following link: [The Big Reconnect](#). Enrol now and use the coupon code: **MBIFREE** to gain access.

As many of you will be aware, the government introduced two new policies in education this year - a ban on cellphones and a mandatory hour of Reading, Writing, and Mathematics each day. Here at MBIS, all students are expected to hand in their cellphones upon arrival to school, to their classroom teacher. Teachers lock these away in a safe and secure location and return them to students at the end of the school day. This expectation also extends to smartwatches that have a SIM card and can be used as a phone. If you need to get in touch with your son or daughter throughout the course of the day, please contact Michelle at the front office.

Our classroom timetable structure meets the Ministry of Education requirements for the deliberate and purposeful teaching of Maths, Reading, and Writing each day. All students are receiving regular, focused instruction in these core areas.

Finally, as we conclude our first full week here at school, a reminder to please keep any sick children at home. There is a lot of COVID around at the moment and with the weather we are experiencing, hot sticky classrooms are the perfect place for illness to spread. If your child tests positive for COVID, they should stay home for 5 days. It is important that we work together to protect one another.

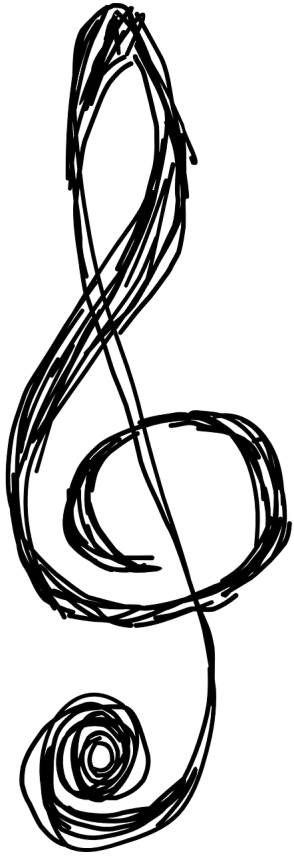
Wishing you all a wonderful weekend ahead.

Ngā mihi nui,

*Melinda Hes* Principal / Tumuaki

## On Another Note

with the Music Department



### Musicians Needed:

Does your child want to be in a music group and can play piano / read music well? We are in search of a few percussion players including glockenspiel / vibraphone for Concert Band and Orchestra. Please ask your child to come and visit Mrs Holmes' office (Room 44) to ask about this possibility.

### Handbells:

Last opportunity to sign up for a Handbells Audition as these take place on Monday 19th February 12pm in the hall. Students must hold or be playing at least Grade 5 level. You can register here for auditions. A reminder that if your child was in handbells in 2023, they're welcome to do it again in Year 8 but they still need to come on the 19th and should be registered.

### Beginner Band (Calling all Trombone Enthusiasts):

We got off to a great (noisy) start on Wednesday with **89** very anxious but excited new musicians. I am hoping to find a few more students keen to learn the trombone, so if that's your child, it is not too late to learn something new and be part of something great. Email [sarah.holmes@mbi.school.nz](mailto:sarah.holmes@mbi.school.nz) for more information.

## Uniform Updates

with Leigh Hand

### Kindo Orders:

All uniform items can be ordered via the Kindo App. Orders will be collated every **Wednesday** and **Friday** and sent directly to the student.

### Uniform Queries and Fittings :

All queries and fittings (for new students or those who need to swap sizes) will be on a **Tuesday** and **Wednesday between 8am and 2pm**.  
Email queries to: [leigh.hand@mbi.school.nz](mailto:leigh.hand@mbi.school.nz)

# Uniform Purchases

### Ankle Socks:

Our second batch of stock should be arriving next week - all those who are still awaiting stock will receive them as soon as we receive them. Apologies for the delay but we hadn't anticipated the HUGE growth spurt everyone had over December holidays, hence the larger sizes are out of stock.

**Hoodies and Surname Printing:** There are still a few sizes we are awaiting and will send them out as soon as we have them in stock. If you would like to have your child's surname placed on the back of their hoodie (no nick names or first names) please contact: **NZ UNIFORMS- 19A Douglas Alexander Parade, Rosedale- 09 477 6300**

## NEW Supporters Gear

This year, MBIS is thrilled to announce the launch of our very own **Supporters Shop!**

We've created a small range of MBIS-branded items specifically tailored for coaches, managers, and supporters to proudly wear and show their school spirit. The Supporters Shop will be open for purchases from Friday, February 16th, through to Friday, March 1st.

After this initial period, the shop will temporarily close to allow for the production of items, which are made to order. Anticipated delivery time is estimated to be 6-8 weeks.

In addition, we're excited to share that we're exploring the possibility of adding a scarf and beanie to the shop as well. To gauge interest around these items, please take a moment to complete this quick [Google Form](#).

We warmly encourage you to explore the shop and consider showing your support for our school by purchasing some of our exclusive merchandise. Thank you for being a part of our MBIS community and for your ongoing support. We can't wait to see everyone proudly sporting their MBIS gear!

## Cultural Pānui



### Kapa Haka and Pasifika Group

We had a massive turn out at Kapa Haka this week with well over 100 keen year 7 and 8 students to learn and love Kapa Haka, Te Reo Māori and Te Āo Māori. We have started our bracket of waiata and haka and look forward to working with these awesome students this year.

We have incorporated Pasifika culture into our Kapa haka programme. We asked the Kapa haka students who would be keen to form a Pasifika group and learn some Siva and other polynesian dances and everyone put up their hand. So, we are partnering together to learn, embrace and treasure both Māori and Polynesian cultures.

### Upcoming Events:

**The Auckland Secondary Schools Māori & Pacific Islands Cultural Festival (Polyfest) 20-23 March.** [Polyfest 2024](#)

**Pipihwharauoa Festival** - Monday, March 25th from 4pm - 9pm at Rangitoto College.





**Lunar New Year** is a celebration of the arrival of spring and the beginning of a new year on the lunisolar calendar. It is the most important holiday in China, and it is also widely celebrated in South Korea, Vietnam, and countries with a significant overseas Chinese population.

**Chinese New Year 2024 is a Year of the Dragon**, more specifically, Wood Dragon, starting from February 10th, 2024, and lasting until January 28th, 2025. Recent/upcoming years of the Dragon are 2024, 2012, 2000, and 1988. If you were born in one of the above years, then you are a Dragon. Dragons in Chinese culture symbolize great power, good luck and strength. They represent power and authority, particularly control over typhoons, water, rainfall and floods. Emperors were assumed to have descended from the dragons. That is why, out of the twelve zodiac signs, the Dragon is the most popular one.

**Korean New Year or 'Seollal'**, falling on February 10 this year, is a festival and national holiday that usually occurs in January or February on the second new moon after the winter solstice, unless there is an intercalary 11th or 12th month in the lead-up to the New Year. It marks the first day of the Korean calendar. It is one of the most important traditional Korean holidays. We hope everyone who celebrated the Lunar, Chinese New Year, and Seollal over the weekend had a lovely and safe celebration!

## General

### Visitors on school premises:

All visitors to MBIS **ARE TO PLEASE** report to reception and sign into the visitors system. This is to protect our ngā ākonga (students) and teachers.

### Late Arrivals:

All students who arrive late to school **ARE TO PLEASE** report to reception to sign in. This will go a long way in helping our roll call in the morning.

### Student Contact Information:

Kindly ensure your contact details are up to date on the school records - for any change in details please email [office@mbi.school.nz](mailto:office@mbi.school.nz). We are having a lockdown practice this term and it is imperative we have the correct details for the communications.

## Canteen



### Fill those *Hungry Bellies*

All canteen orders can be conveniently placed via the KINDO App before 8:30 am each day.

The menu is loaded with DELICIOUS eats (including Gluten Free items).





## Week 4 & 5 Planner

MONDAY      TUESDAY      WEDNESDAY      THURSDAY      FRIDAY

	(19 Feb)	(20 Feb)	(21 Feb)	(22 Feb)	(23 Feb)
WEEK <i>four</i>	EOTC Wero Rms 9 & 10  Y8- Netball Trials	<b>CAMP FINLAY (RANGITOTO MINISCHOOL)</b>  EOTC Wero Rms 11 & 12	<b>CAMP FINLAY (RANGITOTO MINISCHOOL)</b>	<b>CAMP FINLAY (RANGITOTO MINISCHOOL)</b>  <b>Board Meeting 7pm to 9pm</b>	<b>CAMP FINLAY (RANGITOTO MINISCHOOL)</b>  EOTC WW Rm 17 (am) & Rm 31 (pm)  EOTC Wero Rms 7 & 8
	(26 Feb)  EOTC Trees Rm 36  EOTC WERO Rms 13 & 14  EOTC WW Rm 40 (am) & Rm 39 (pm)  <b>LOCKDOWN PRACTICE</b>	(27 Feb)  EOTC Trees Rms 5 & 6  North Harbour Boys Softball Zone Day	(28 Feb)  North Harbour Girls Softball Zone Day	(29 Feb)	(1 Mar)  EOTC Trees Rms 7 & 8  EOTC WERO Rms 16 & 17  EOTC WW Rm 11 (am) & Rm 9 (pm)

## Support 150 years of Firefighting in Tāmaki Makaurau

# Celebrating 150 years

OF FIREFIGHTING IN TĀMAKI MAKAURAU AUCKLAND

**SUNDAY  
17<sup>TH</sup> MARCH**

10am - 3pm

**THE CLOUD  
QUEENS WHARF**

- Help celebrate the evolution of firefighting in Tāmaki Makaurau
- Meet the firefighters who keep our communities safe
- Learn about fire risk and safety to keep you and your whānau safe
- Meet our partner agencies
- Free admission

This March, we're celebrating 150 years of firefighting in Tāmaki Makaurau Auckland with a free public open day in central Auckland.

Established in 1874, Auckland's first official fire brigade consisted of a single fire chief and a small team of dedicated volunteers who dragged their few hoses, hose reels and ladders to attend fires in the inner city and a few fringe suburbs.

Today, Fire and Emergency in Tāmaki Makaurau serves and protects a population of more than 1.3 million Aucklanders using the latest fire trucks, equipment, and technology with paid and volunteer staff.

**Entry:** FREE

**Bring:** Sunscreen and bottled drinking water

**Plan your journey** ahead of time to avoid the traffic and parking.



## Stretch Your Brain

With Mr Tabuzo (Room 16)

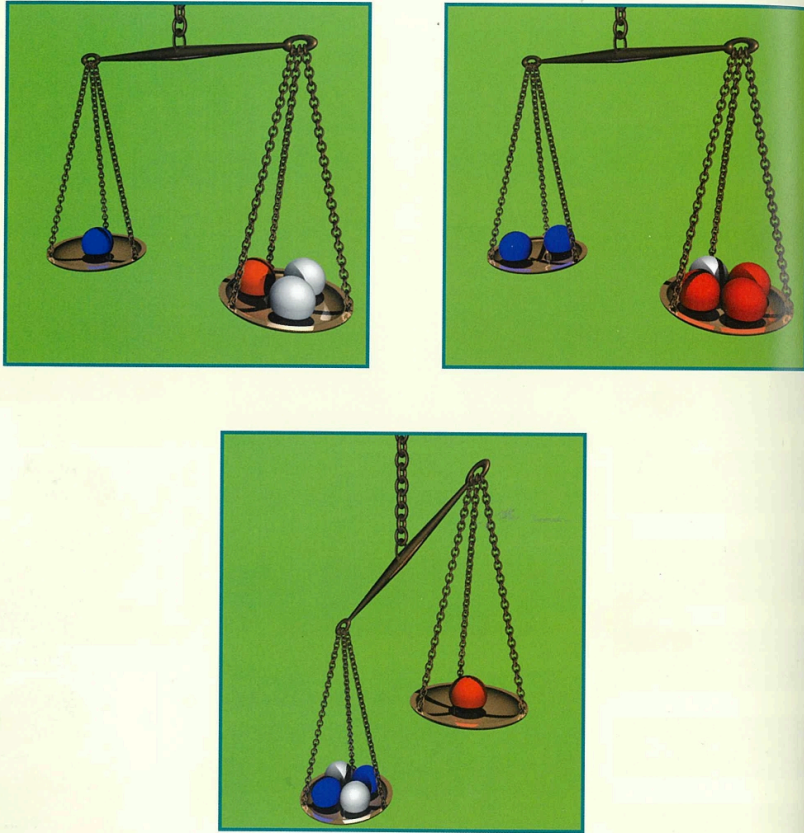
At MBI, we enjoy diving into math and solving cool problems and questions. By having discussions about rich problems and tasks, we get to boost our critical thinking, logic, and reasoning. Here's a fun way to do it with our family!

Every Friday, there will be a question in the newsletter. Students are encouraged to solve it with anyone from the family.

Congratulations to **Ahyeon Kim** for winning the first Stretch Your Brain challenge. The answer is 204 squares. This is because you have to calculate how many 1 x 1 squares, 2 x 2 squares, 3 x 3 squares and so on that are on the chessboard. These numbers end up being the square numbers: 64, 49, 36, 25, 16, 9, 4, 1. These added together equals 204.

Here is this week's challenge:

**49** Study the two balanced scales. How many red balls are needed to balance the third one? (Balls of the same color are identical in weight.)



The image shows three balanced scales. The first scale has 1 blue ball on the left pan and 1 red ball, 1 white ball, and 1 blue ball on the right pan. The second scale has 2 blue balls on the left pan and 2 red balls, 1 white ball, and 1 blue ball on the right pan. The third scale has 1 blue ball, 1 white ball, and 1 blue ball on the left pan and 1 red ball on the right pan.

Enter the answer in this [link](#). Upload a picture or video of you and your whanau solving it.

On Thursday, we will conduct a random draw to select a winner who will receive an Aqualite! We will announce the winner on MBITV.

## Community Notices



### DRAMA - DANCE - SINGING

Accelerate Confidence and Communication Skills

Enrol in February to be in the draw to win one of ten April Holiday programs with a bestie.

"Pform.nz classes provide the most fun of our son's week"

There is a Pform venue near you in Birkenhead every Tuesday & Murrays Bay every Wednesday and advanced training at Wellesley Studios every Saturday.

### ADVANCED PERFORMANCE TRAINING

These courses are designed for those students who want to take their education in the Performing Arts further. If you want to audition with success then these are the courses for you. You will train in a fun and challenging environment with performers who are like-minded.

No previous experience is necessary but would be an advantage.

Performers will have the opportunity to tour and have numerous big-stage performances.

You will train at the Wellesley Street Studios each Saturday.

Free Trials available for a limited time [www.pform.nz/free-trial](http://www.pform.nz/free-trial)

[www.pform.nz](http://www.pform.nz) [info@pform.nz](mailto:info@pform.nz)

# EXTRAORDINARY KIDS



## After-school Tutoring

Does your child need extra encouragement to improve their Maths, Reading, and Writing?

Helping students 7 - 17 years old

Free Assessment

[www.extraordinarykids.co.nz](http://www.extraordinarykids.co.nz)

## HOOP33 BASKETBALL ACADEMY

Looking to improve your game?  
Sessions 4-5pm Tuesday-Friday  
School Years 7-8

[WWW.HOOP33.CO.NZ](http://WWW.HOOP33.CO.NZ)

165 Target Rd, Wairau Valley  
[andrewm@hoop33.co.nz](mailto:andrewm@hoop33.co.nz)

FREE TRIAL!



FAMILY . JOY. DEDICATION . STRIVE

## MID BAYS MUSIC SCHOOL 2024

Our highly qualified tutors make learning music relevant and enjoyable and would love to support your child.

When: Weekdays after school or Saturday mornings.

Where: Murrays Bay Intermediate School.  
Start date: 10th February 2024.

Instruments offered: Guitar, Ukulele, Saxophone, Keyboard, Trumpet, Recorder, Flute, Violin, Cello and Clarinet.

Click [here](#) to find out more about each instrument.

Cost: \$170 - \$270 for the whole year (this includes book hire but NOT instrument hire).

Age: Group lessons are open to 6 - 12 year olds but there are [age requirements](#) for some instruments.

Enrolments need to be completed through Kindo and you will need to create an account for this. Any troubleshooting solutions will be online at [www.mbmusic.org](http://www.mbmusic.org) or email [mbmusic@mbi.school.nz](mailto:mbmusic@mbi.school.nz) with any questions. Please check our [website](#) for more information.

To advertise in our weekly newsletter email Leigh Hand - [leigh.hand@mbi.school.nz](mailto:leigh.hand@mbi.school.nz).  
Adverts need to be relevant to our School Community.